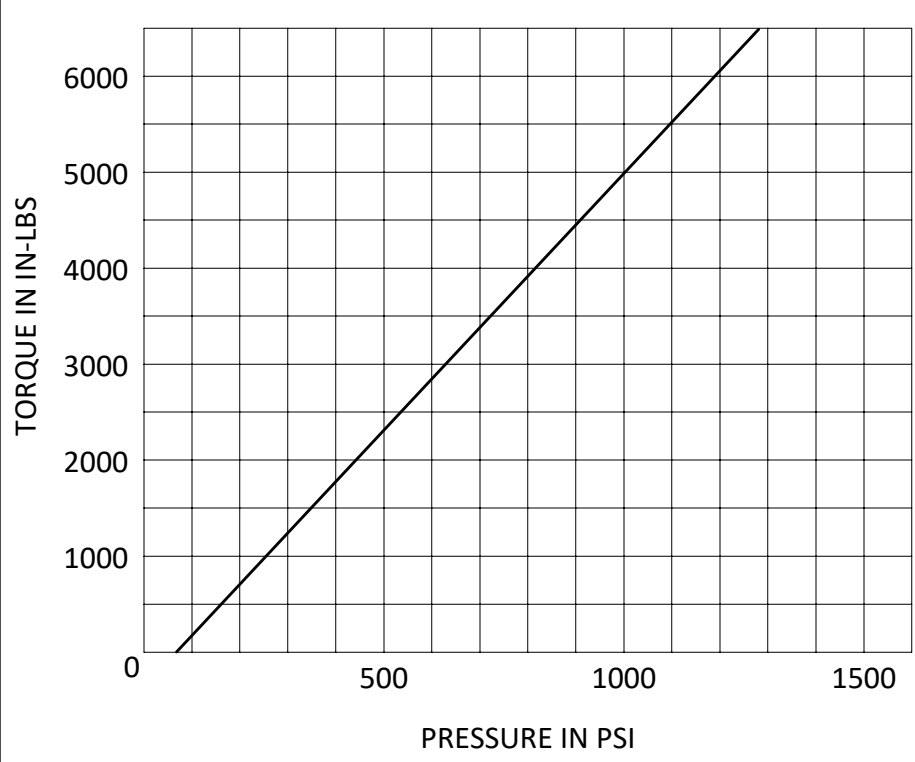
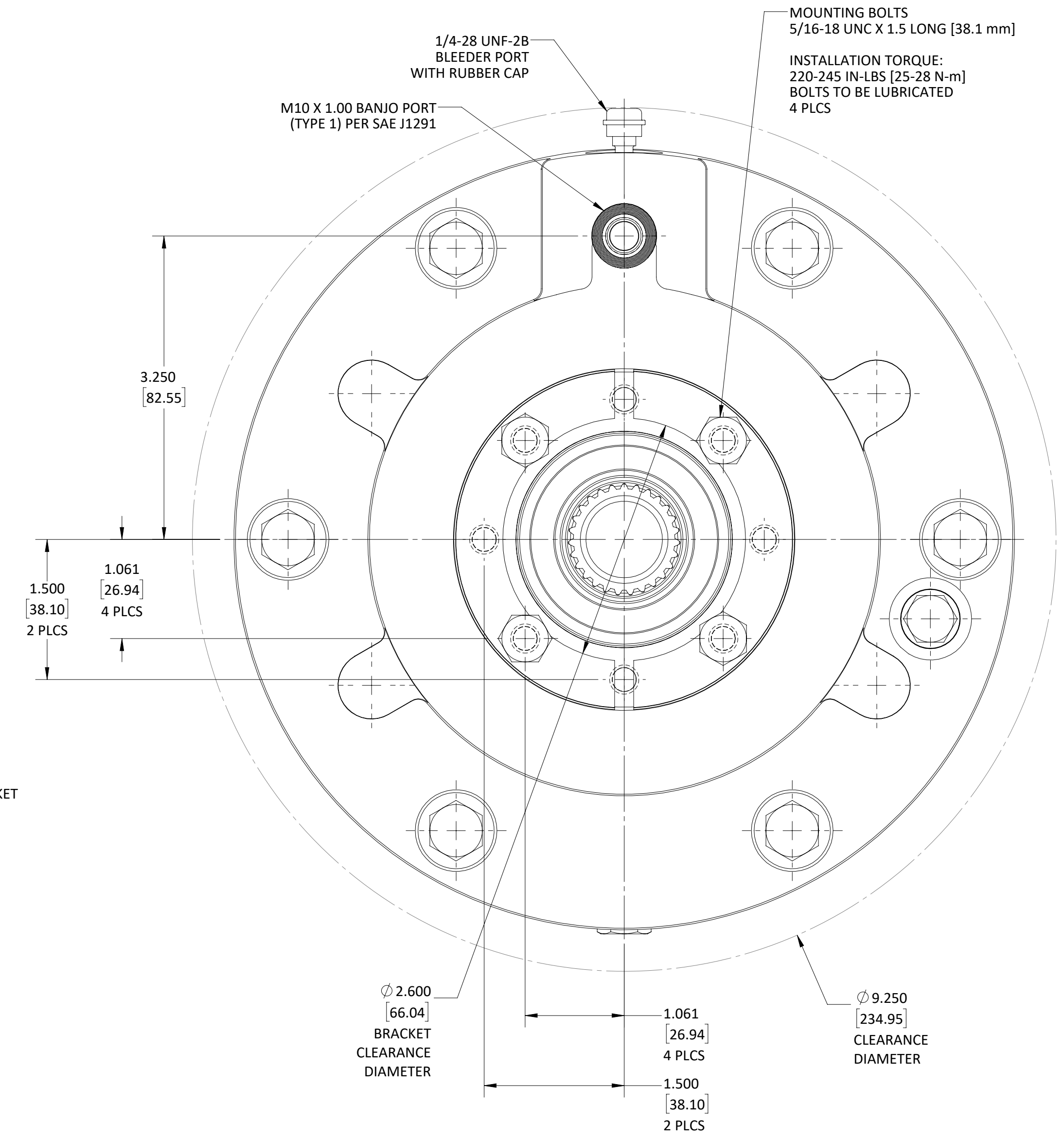
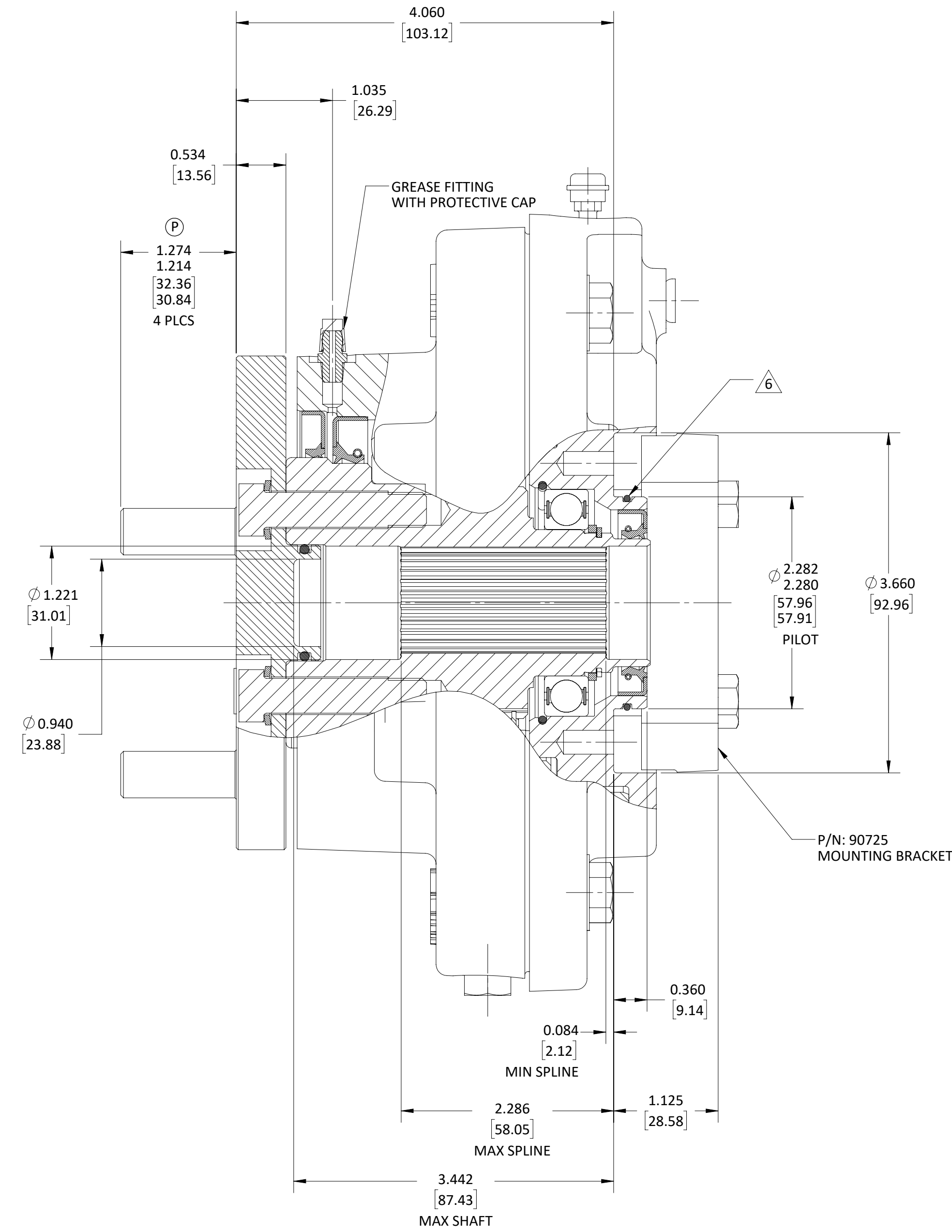
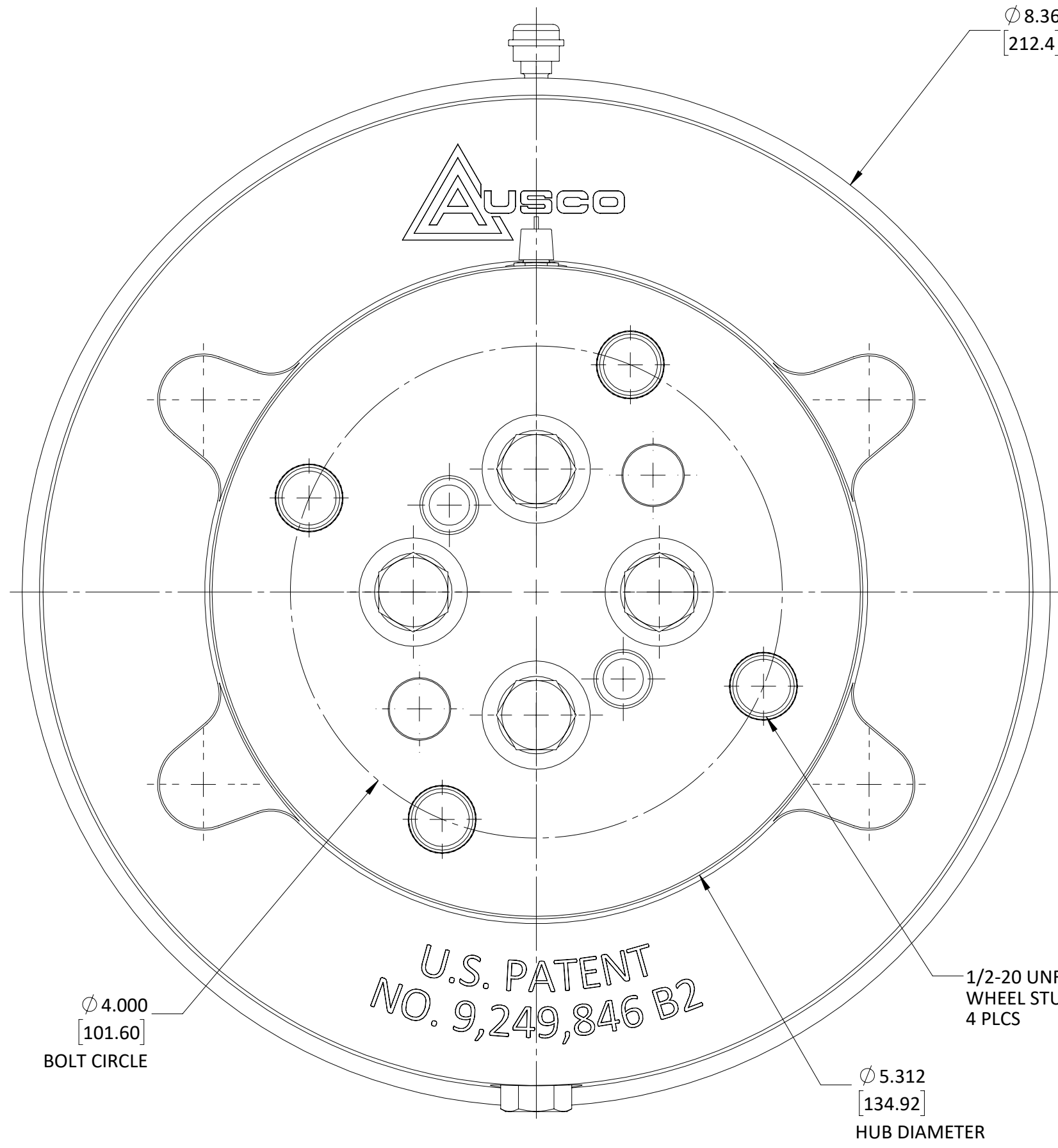


- NOTES:
- THIS DRAWING IS MEANT TO PROVIDE CUSTOMER MOUNTING DATA ONLY. ALL DIMENSIONS ARE REFERENCE UNLESS OTHERWISE NOTED.
  - THE TORQUE INFORMATION CONTAINED IN THIS DOCUMENT IS FOR REFERENCE ONLY. IT IS RECOMMEND THAT THIS BRAKE BE TESTED IN THE SPECIFIC APPLICATION TO VERIFY PERFORMANCE.
  - NOTE REMOVED.
  - BRAKE IS PREFILLED WITH 240 mL OF AW68 OIL.
  - 0.126 CU. IN. [2.06mL] MIN ACTUATION VOLUME (NEW).  
0.362 CU. IN. [5.93mL] MIN ACTUATION VOLUME (WORN).
  - CUSTOMER TO APPLY LUBRICANT TO PILOT. (DOW CORNING 200 OR EQUIVALENT).
  - ACTUATION FLUID: PETROLEUM BASED HYDRAULIC FLUID ONLY.



(N5)  
(N4)  
(N3)  
(N2)  
(N6)

FLANGE KIT	STUD KIT	STUD KIT	PRESSURE LIMITS (PSI) [BAR]		SPEED BY SHAFT ORIENTATION		OIL FILL BY SHAFT ORIENTATION		SERVICE DATA		SPLINE DATA	
107509	PK.2233	PK.2686	MAXIMUM OPERATING	SPIKE / SURGE	HORIZONTAL	1000 RPM	HORIZONTAL	SEE NOTE 4	5,000 [565]	@	1,000 [69]	27T 24/48
-	-	-	PARK	N/A	VERTICAL	SEE AUSCO	VERTICAL	SEE AUSCO	RATED TORQUE (LB-IN) [Nm]	PRESSURE (PSI) [BAR]	INPUT (INTERNAL)	OUTPUT (EXTERNAL)
-	-	-	SERVICE	1500 [103]	2000 [138]							

KAD	P	DESCRIPTION	DATE	BY		
KAD	P	32263 WAS 1.339/1.279	06-18-24	TSZ		
NDC	N6	32246 ADDED FLANGE KIT 107509	05-30-24	TSZ		
NDC	N5	32246 REMOVE STACK KIT PK.2036	05-30-24	TSZ		
NDC	N4	32246 REMOVED BEARING KIT PK.2035	05-30-24	TSZ		
NDC	N3	32246 REMOVED THRUST WASHER KIT PK.2231	05-30-24	TSZ		
NDC	N2	32246 REMOVED O-RING KIT PK.2037	05-30-24	TSZ		
NDC	N1	32246 REMOVED REVISIONS J & K	05-30-24	TSZ		
NDC	M	32154 UPDATED PICTORIALY	04-11-24	TSZ		
NDC	L	32109 PICTORIALY UPDATED	03-05-24	DJS		
JAH	A	26362 RELEASE FOR PRODUCTION	12-10-10	LTC		
CHK	REV	ECO	DESCRIPTION	ZONE	DATE	BY

DO NOT SCALE THIS DRAWING. PROPRIETARY DATA: NOT TO BE DISCLOSED, USED, OR DUPLICATED FOR PROCUREMENT OR MANUFACTURING PURPOSES EXCEPT AS AUTHORIZED IN WRITING BY AUSCO PRODUCTS, INC.

**AUSCO** **SOLIDWORKS**

PART NAME: CUSTOMER CONFIGURATION M/D BRAKE - WET

PROJECT: 4703 DATE: 2010-07-16

DESIGNER: K. McALLISTER SCALE: 1:1 PART NUMBER: CC93040 SHEET 1 OF 1