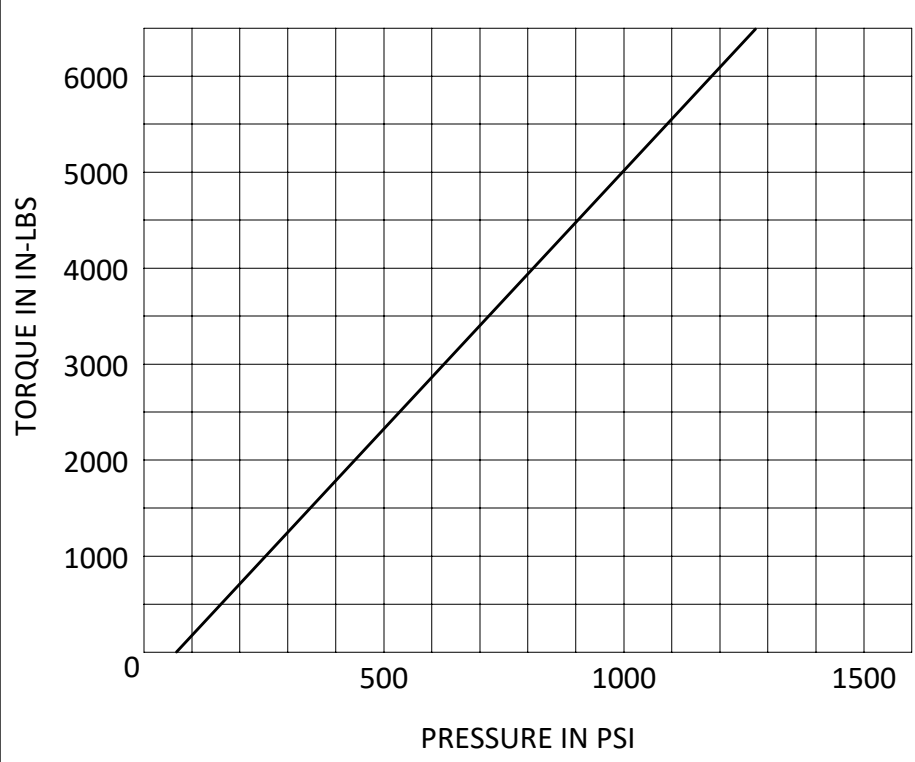
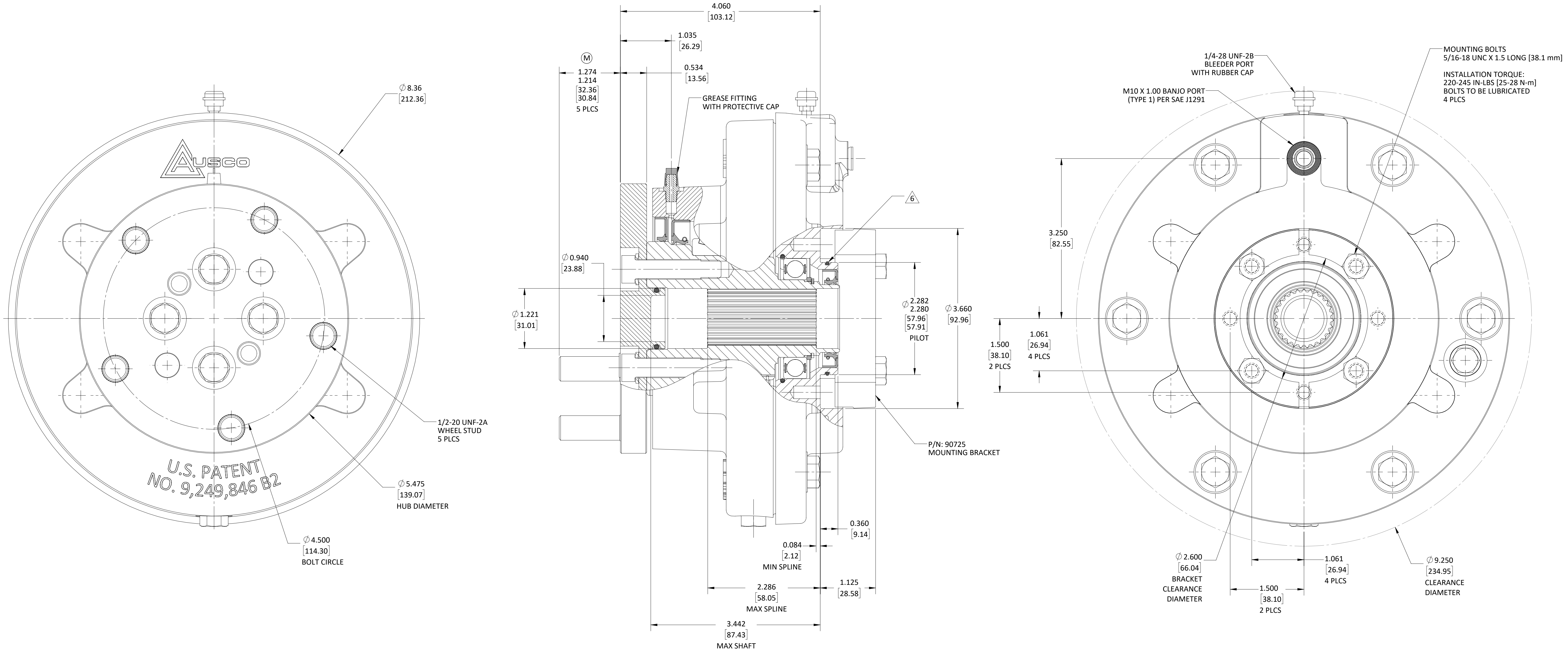


- NOTES:
- THIS DRAWING IS MEANT TO PROVIDE CUSTOMER MOUNTING DATA ONLY. ALL DIMENSIONS ARE REFERENCE UNLESS OTHERWISE NOTED.
 - THE TORQUE INFORMATION CONTAINED IN THIS DOCUMENT IS FOR REFERENCE ONLY. IT IS RECOMMEND THAT THIS BRAKE BE TESTED IN THE SPECIFIC APPLICATION TO VERIFY PERFORMANCE.
 - NOTE REMOVED.
 - BRAKE IS PREFILLED WITH 240 mL OF AW68 OIL.
 - 0.126 CU. IN. [2.06mL] MIN ACTUATION VOLUME (NEW).
 - 0.362 CU. IN. [5.93mL] MIN ACTUATION VOLUME (WORN).
 - CUSTOMER TO APPLY LUBRICANT TO PILOT. (DOW CORNING 200 OR EQUIVALENT).
 - ACTUATION FLUID: PETROLEUM BASED HYDRAULIC FLUID ONLY.



(L4)
(L5)
(L2) (L3) (L6)

FLANGE KIT	STUD KIT	STUD KIT	PRESSURE LIMITS (PSI) [BAR]		SPEED BY SHAFT ORIENTATION		OIL FILL BY SHAFT ORIENTATION		SERVICE DATA		SPLINE DATA		
			MAXIMUM OPERATING	SPIKE / SURGE	HORIZONTAL	1000 RPM	HORIZONTAL	SEE NOTE 4	5,000 [565]	@ 1,000 [69]	27T 24/48	5 BOLTS ON: $\phi 4.500$ [114.3mm]	
107510	PK.2686	PK.2233	PARK	N/A	N/A	HORIZONTAL	1000 RPM	HORIZONTAL	SEE NOTE 4	RATED TORQUE (LB-IN) [Nm]	PRESSURE (PSI) [BAR]	INPUT (INTERNAL)	OUTPUT (EXTERNAL)
-	-	-	SERVICE	1500 [103]	2000 [138]	VERTICAL	SEE AUSCO	VERTICAL	SEE AUSCO				

CHK	REV	ECO	DESCRIPTION	ZONE	DATE	BY
KAD	M	32263	WAS 1.339/1.279	D4	06-18-24	TSZ
NDC	L6	32246	ADDED FLANGE KIT 107510	A3	05-30-24	TSZ
NDC	L5	32246	REMOVED STACK KIT PK.2036	A3	05-30-24	TSZ
NDC	L4	32246	REMOVED BEARING KIT PK.2035	A3	05-30-24	TSZ
NDC	L3	32246	REMOVED THRUST WASHER KIT PK.2231	A3	05-30-24	TSZ
NDC	L2	32246	REMOVED O-RING KIT PK.2037	A3	05-30-24	TSZ
NDC	L1	32246	REMOVED REVISIONS G & H		05-30-24	TSZ
NDC	K	32154	UPDATED PICTORIALY		04-11-24	TSZ
NDC	J1	32109	PICTORIALY UPDATED		03-05-24	DJS
KAD	A	26685	RELEASE FOR PRODUCTION		08-17-11	KMc

DO NOT SCALE THIS DRAWING. PROPRIETARY DATA: NOT TO BE DISCLOSED, USED, OR DUPLICATED FOR PROCUREMENT OR MANUFACTURING PURPOSES EXCEPT AS AUTHORIZED IN WRITING BY AUSCO PRODUCTS, INC.

AUSCO

PROJECT: 4703 DATE: 2010-06-16

DESIGNER: K. McALLISTER

CUSTOMER CONFIGURATION M/D BRAKE - WET

PART NUMBER: CC92699

SCALE: 1:1 SHEET 1 OF 1