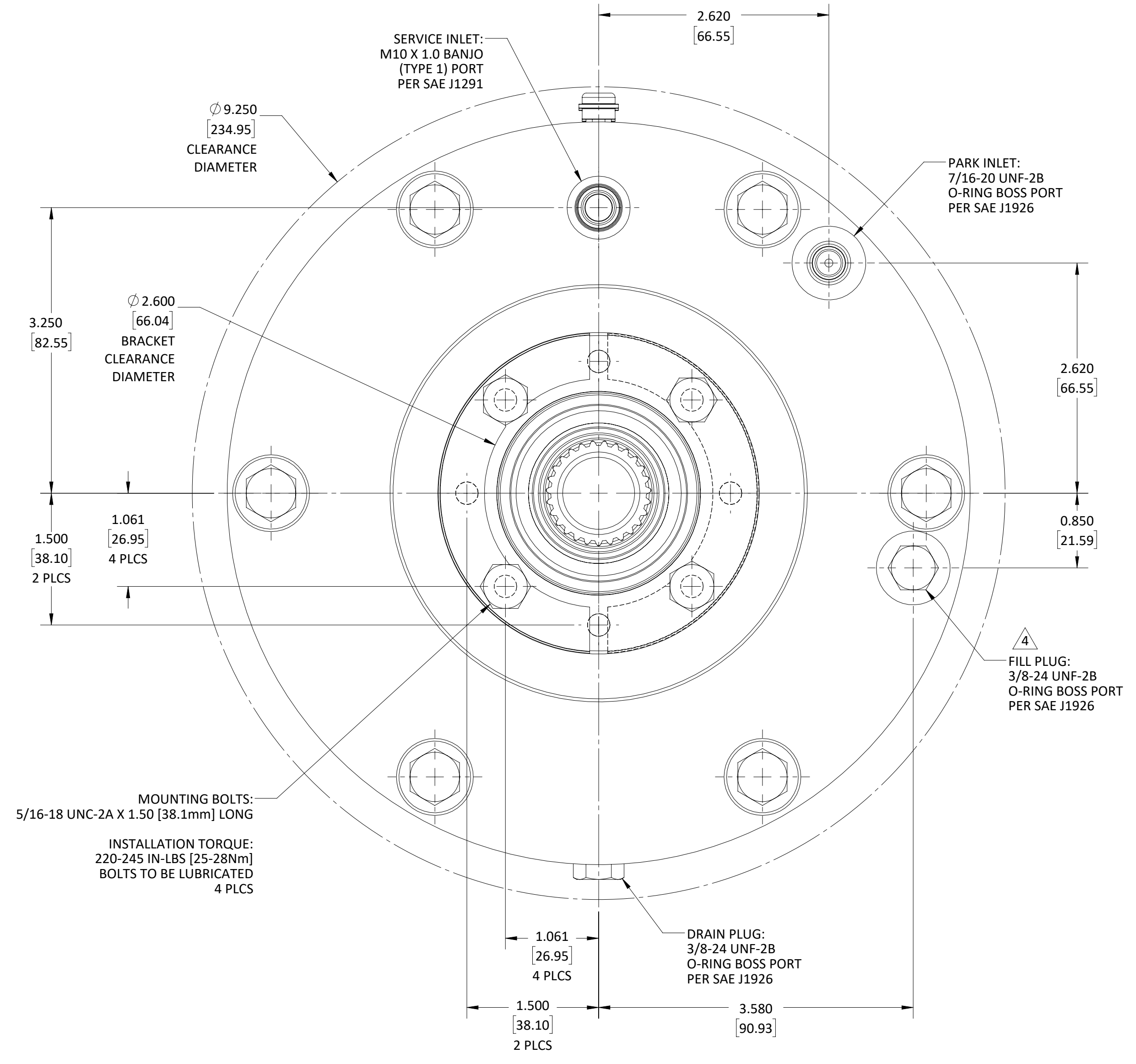
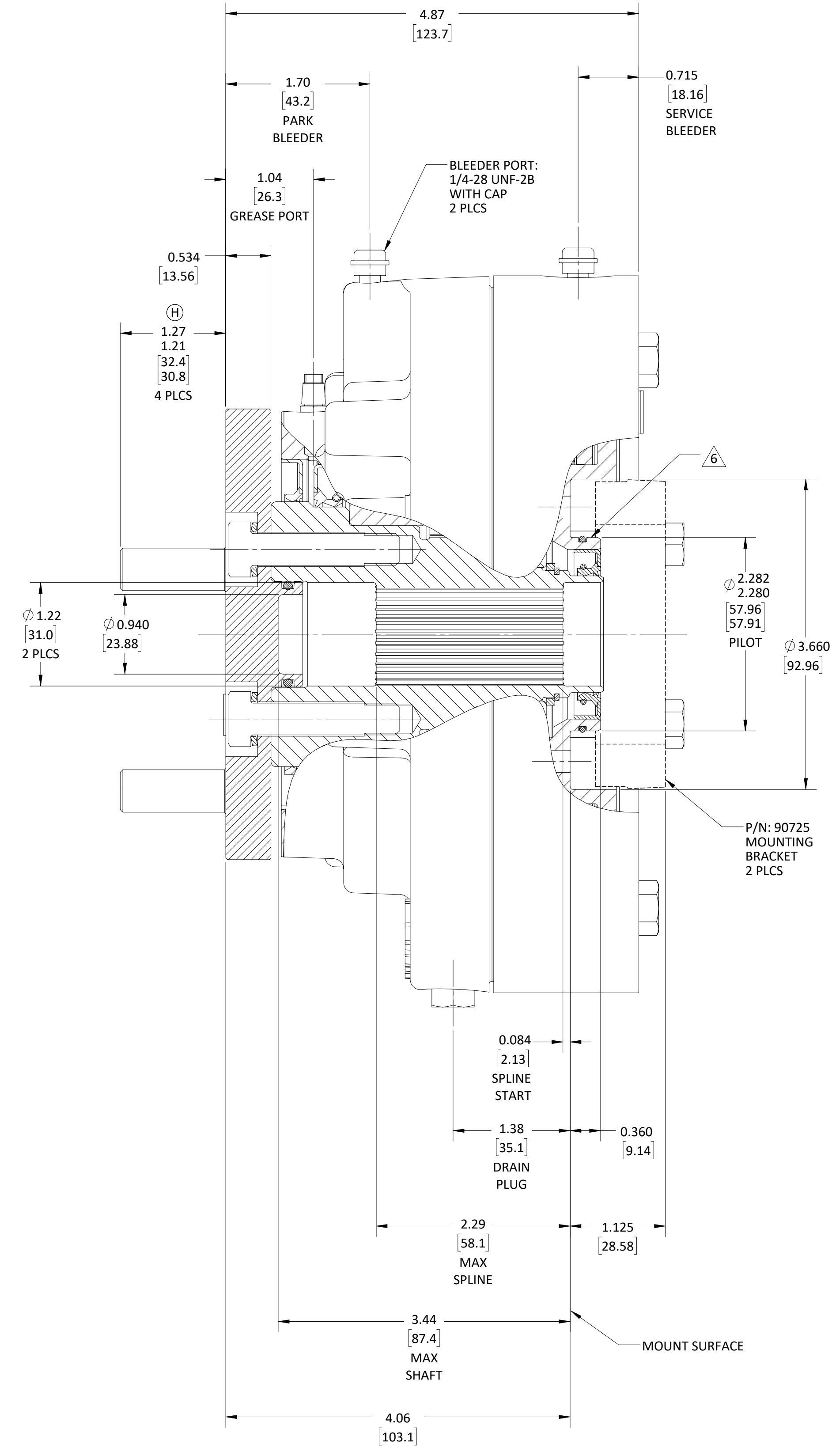
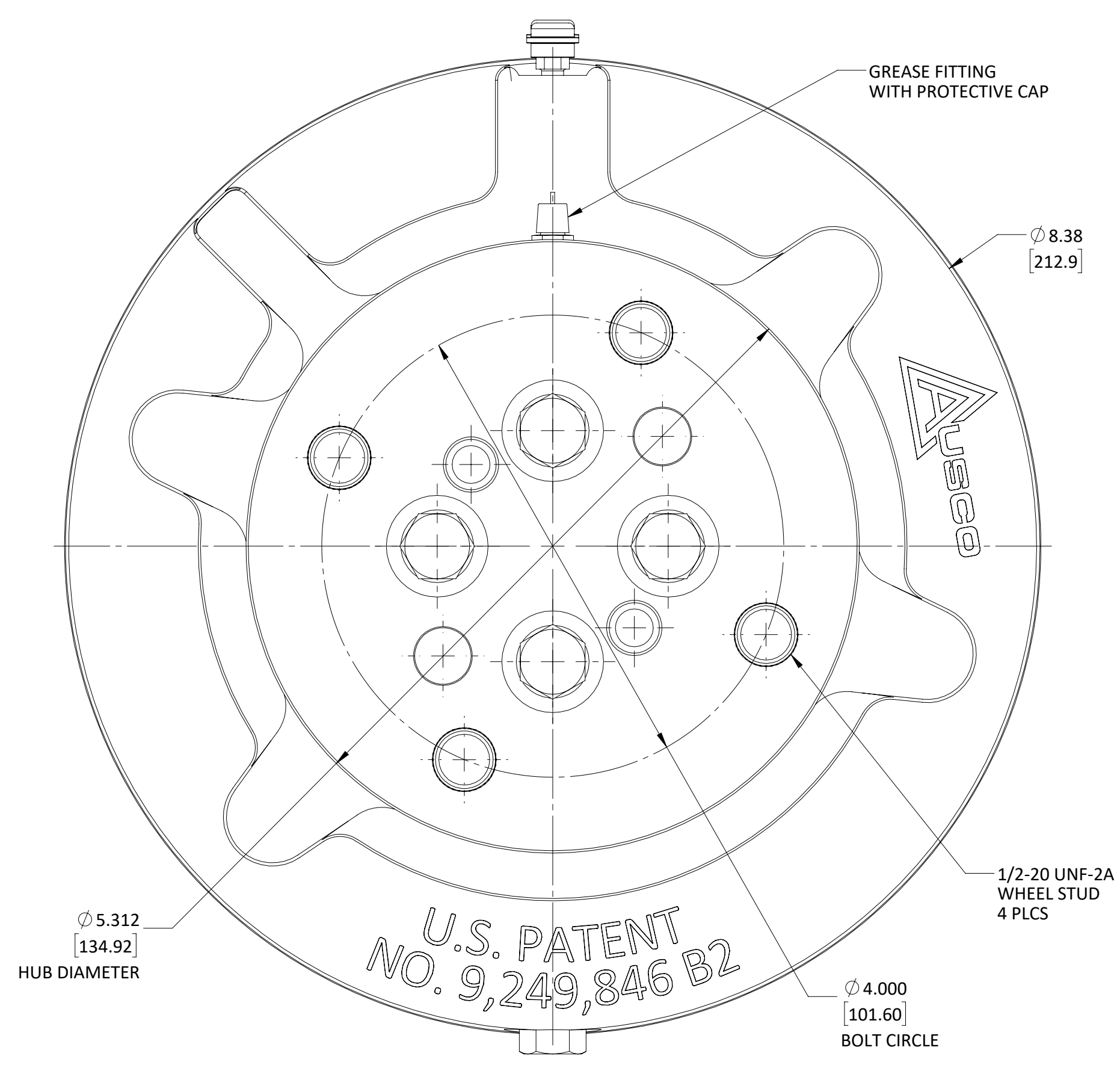


- NOTES:
- THIS DRAWING IS MEANT TO PROVIDE CUSTOMER MOUNTING DATA ONLY. ALL DIMENSIONS ARE REFERENCE UNLESS OTHERWISE NOTED.
 - THE TORQUE INFORMATION CONTAINED IN THIS DOCUMENT IS FOR REFERENCE ONLY. IT IS RECOMMEND THAT THIS BRAKE BE TESTED IN THE SPECIFIC APPLICATION TO VERIFY PERFORMANCE.
 - FILL HOUSING WITH THE SPECIFIED QUANTITY OF AW68 OIL (SEE CHART BELOW). THE AMOUNT OF OIL NEEDED IS DEPENDENT UPON THE SHAFT ORIENTATION. IF THE SHAFT IS INSTALLED IN A HORIZONTAL POSITION, THE AMOUNT OF OIL ADDED TO THE BRAKE WILL BE DIFFERENT THAN IF THE SHAFT IS INSTALLED VERTICALLY.
 - BRAKE IS PREFILLED WITH AW68 OIL.
 - NEW CONDITION MIN SERVICE ACTUATION VOLUME: 0.174 CU. IN [2.85 mL]. WORN CONDITION MIN SERVICE ACTUATION VOLUME: 0.435 CU. IN [7.12mL].
 - CUSTOMER TO APPLY LUBRICANT TO PILOT. (DOW CORNING 200 OR EQUIVALENT)
 - ACTUATION FLUID: PETOLEUM BASED HYDRAULIC FLUID ONLY.
 - BRAKE DESIGN IS COVERED BY U.S. PATENT NO. 9,249,846 B2.

SERVICE TORQUE FORMULA:

ENGLISH: TORQUE (IN*LBS) = 7.724 * PRESSURE (PSI) - 482

METRIC: TORQUE (Nm) = 12.65 * PRESSURE (PSI) - 54.4



*2-PIECE HUB ONLY

STUD KIT*	STUD KIT	FLANGE KIT
PK.2686	PK.2233	107509
-	-	-
-	-	-

PRESSURE LIMITS (PSI) [BAR]		SPEED BY SHAFT ORIENTATION		OIL FILL BY SHAFT ORIENTATION	
MAXIMUM OPERATING	SPIKE / SURGE	HORIZONTAL	VERTICAL	HORIZONTAL	VERTICAL
1000 [69]	1000 [69]	1000 RPM <td>SEE AUSCO</td> <td>250 ± 10 mL</td> <td>SEE AUSCO</td>	SEE AUSCO	250 ± 10 mL	SEE AUSCO
1000 [69]	1000 [69]	HORIZONTAL	SEE AUSCO	VERTICAL	SEE AUSCO

MOTOR	REDUCER	FAILSAFE DATA		SERVICE DATA		SPLINE DATA	
N/A	N/A	5500 [621]	475 [33]	7240 [818]	@ 1000 [69]	27T 24/48	4 BOLTS ON Ø4.000 [101.6mm]
MOUNTING FLANGE PER SAE J744	RATED TORQUE (LB-IN) [Nm]	REL. PRESSURE (PSI) [BAR]	RATED TORQUE (LB-IN) [Nm]	PRESSURE (PSI) [BAR]	INPUT (INTERNAL)	OUTPUT (EXTERNAL)	

CHK	REV	ECO	DESCRIPTION	ZONE	DATE	BY
KAD	H	32263	WAS 1.34/1.28	C4	06-18-24	TSZ
NDC	G2	32246	ADDED FLANGE KIT 107509	A2	05-30-24	TSZ
NDC	G1	32246	ADDED STUD KIT PK.2233	A2	05-30-24	TSZ
NDC	F	32154	UPDATED PICTORIALY		04-11-24	TSZ
KMc	E2	32121	REMOVED REVISION B THRU D		03-25-24	DJS
KMc	E1	32121	REVISED AND REDRAWN IN SWX		03-25-24	DJS
KMc	A	29598	RELEASE FOR PRODUCTION		07-07-17	NDC

DO NOT SCALE THIS DRAWING. PROPRIETARY DATA: NOT TO BE DISCLOSED, USED, OR DUPLICATED FOR PROCUREMENT OR MANUFACTURING PURPOSES EXCEPT AS AUTHORIZED IN WRITING BY AUSCO PRODUCTS, INC.

PROJECT: 4888 DATE: 2017-05-01
 DESIGNER: N. CRAWFORD
 PART NAME: CUSTOMER CONFIGURATION M/D BRAKE WITH SERVICE - WET
 SCALE: 1:1 SHEET 1 OF 1
 PART NUMBER: CC101989